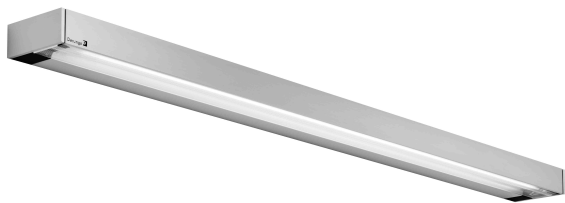


Surface-mounted luminaire

VANERA LED 60 D15391000

Waldmann **W**

ENGINEER OF LIGHT.



fitted with	6 x LED module - Energy efficiency category A+ - D68775000
light distribution	general lighting indirect/direct
color rendering index (CRI)	> 80
colour temperatur	3000 K
connected load	220-240V; 50/60Hz
mains lead	direct power supply
luminaire body	aluminium
weight (net)	3.0 kg
power consumption	53 W
luminous flux	4100 lm
luminous efficacy	77 lm/W
lamp cover	prismatic profile, PMMA
technology	switchable
class of protection	I
norms	EN 60598-1, EN 60598-2-25
special features	front- and side cover aluminium
fastening	ceiling mount, wall mount
glare-free	special wide beam and glare-free technique
system of protection	IP 20
order number	D15391000 - aluminium (anodised)

Derungs 
LIGHT FOR PEOPLE

light distribution

